

CHARLES RIVA COLLECTION

Selected Works by

Candida Höfer Thomas Ruff Hiroshi Sugimoto

In collaboration with Arthur de Ganay Collection

-
05.09 - 30.11.2019

Charles Riva Collection is delighted to present, in collaboration with the Arthur de Ganay Photography Collection (Berlin), a selection of works by Candida Höfer, Hiroshi Sugimoto and Thomas Ruff.

The artworks on display focus on architectural photography, a theme that has regained a significant place in the world of art photography since the 1980s.

The medium itself, through its technical developments, has also favoured the renewal of the genre and its diffusion, particularly through the use of new printing techniques. These enable, among other things, the production of large formats, which have allowed the medium to emancipate itself and thus reach a much wider and more demanding public.

In this exhibition, whether it's Hiroshi Sugimoto's theatre series, Candida Höfer's interior views of the Paris Opera or Thomas Ruff's architectural photographs, the artists focused mainly on architectural motifs. By diluting and blurring them to essentialize their volumes and light. Or by amplifying certain details and playing with the multiple projection spaces, which themselves are staged inside the photographed places.

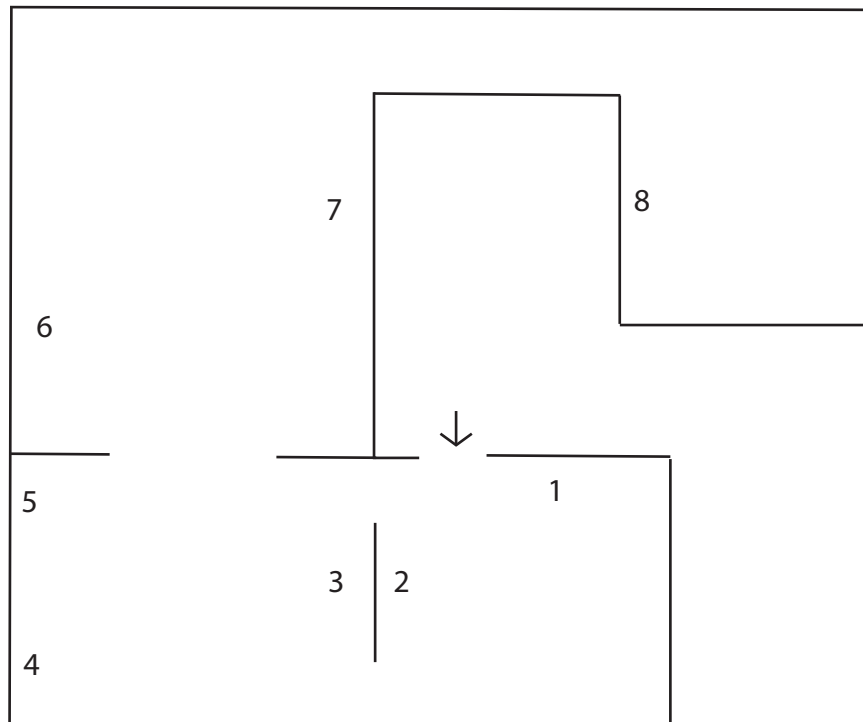
The interior views of the Paris Opera (2005), taken by the German photographer Candida Höfer, thematized the space of the stage and sets with a precision and a quantity of detail, amplified by the large format of the prints. The motifs in this series play on the variations offered by the presence of the different curtains and screens photographed.

This subject has a discreet affinity with the photographs of the *Theatres* (series started in 1978) by the Japanese Hiroshi Sugimoto, where the scene seems reduced to a simple projection surface, like a metaphor. The lighting of the scenes is done by capturing the scattered light during the entire duration of a film screening. Here, the image is thus constituted in and through time, revealing an unreal atmosphere and the photographer's fascination with light.

For his *Architecture* series (1997-2002), Sugimoto photographed various remarkable 20th century buildings, systematically following the same principle of focusing his lens. Through the analogical fuzziness obtained by doing so, the artist achieves a pictorial simplification in his search for reducing volumes to the essential.

In parallel with his *l.m.v.d.r.* series. (1998-2001) Thomas Ruff used a digital directional blur filter to capture the many patterns representing Ludwig Mies van der Rohe's architecture. The dilution of the structures and materials of the motif also reflects the development of a new abstraction in Art Photography.

Floor Plan



1. Candida Höfer
Palais Garnier Paris VII, 2005, 2005
 120 x 120 cm
 Courtesy Arthur de Ganay Collection

2. Candida Höfer
Palais Garnier ParisXXXI, 2005, 2005
 200 x 260 cm
 Courtesy Arthur de Ganay Collection

3. Hiroshi Sugimoto
Woodland Chapel, 2001
 Gelatin-silver print
 148 x 119 cm
 Private Collection

4. Hiroshi Sugimoto
Guggenheim Museum, Bilbao, 2000
 Gelatin-silver print
 58 x 47 cm
 Private Collection

5. Hiroshi Sugimoto
Teatro Scientifico del Bibiena, 2015
 Gelatin-silver print
 85x72 x 3 cm
 Courtesy Galleria Continua

6. Thomas Ruff
w.h.s. 04, 2001
 185 x 245 cm
 Courtesy Arthur de Ganay Collection

7. Thomas Ruff
w.h.s. 08, 2001
 185 x 245 cm
 Courtesy Arthur de Ganay Collection

8. Thomas Ruff
H.T.B.09, 2000
 C-Print on Plexiglass
 130.1 x 196.8 cm x 5 cm
 Private Collection